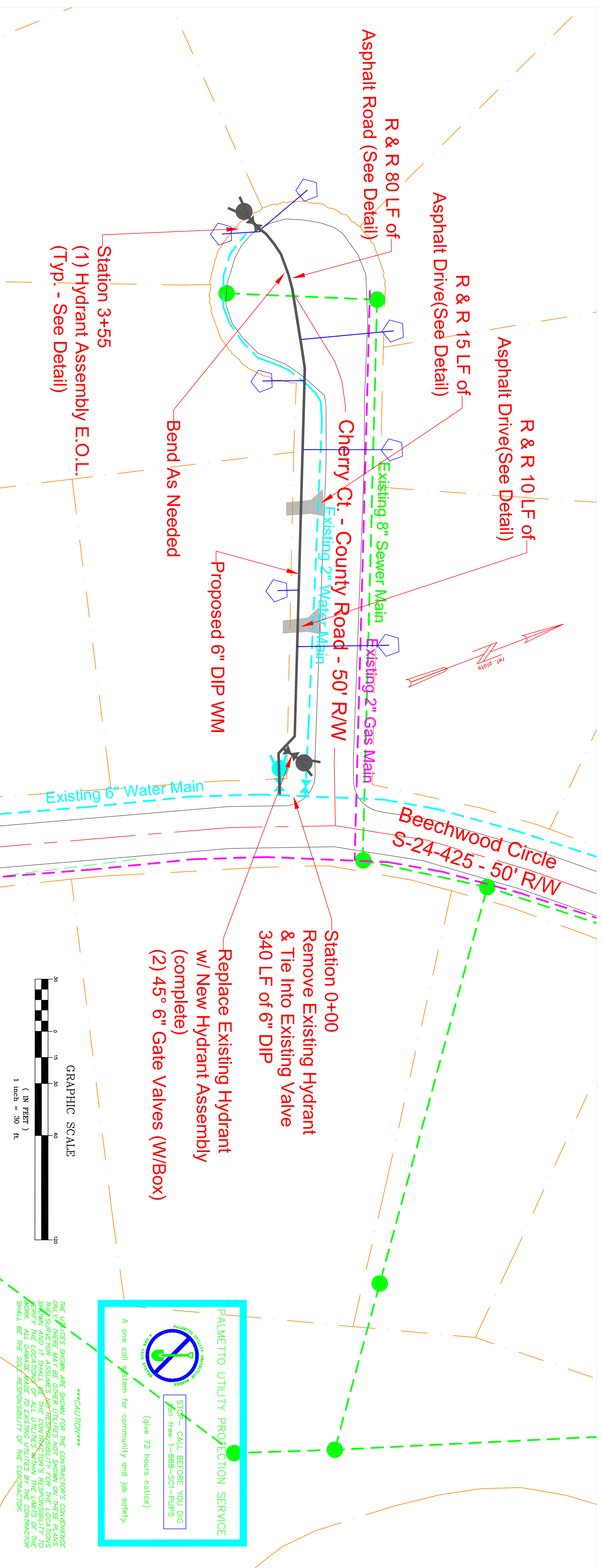
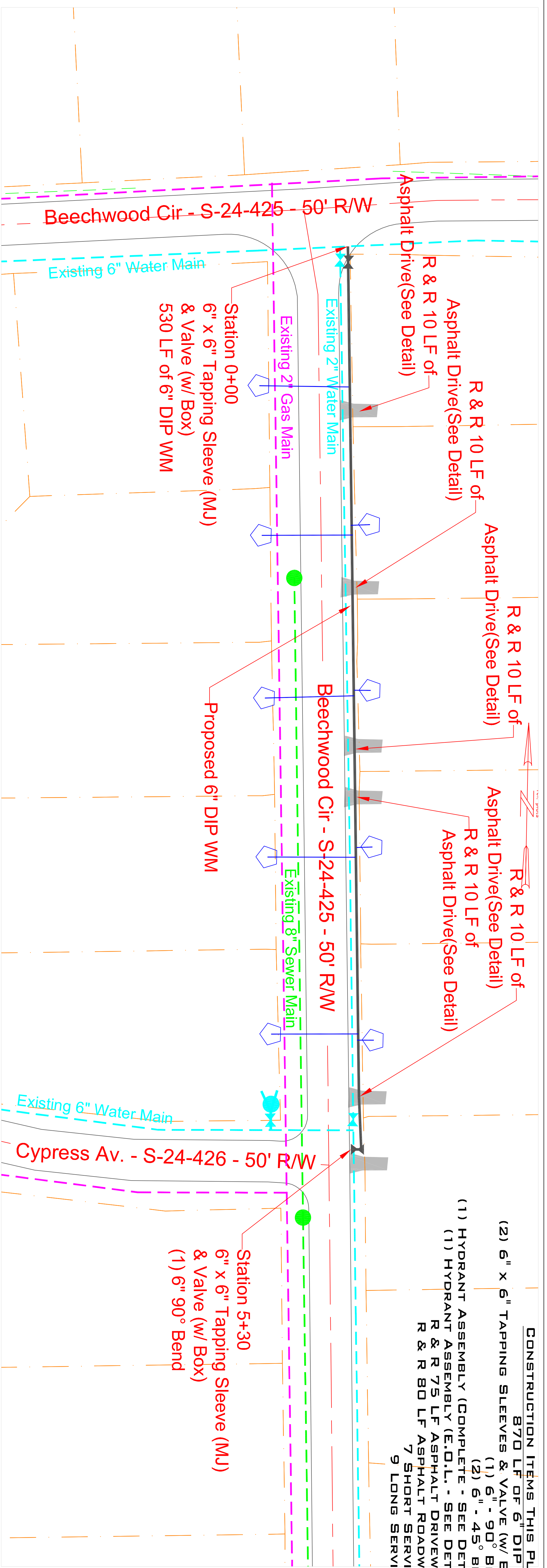
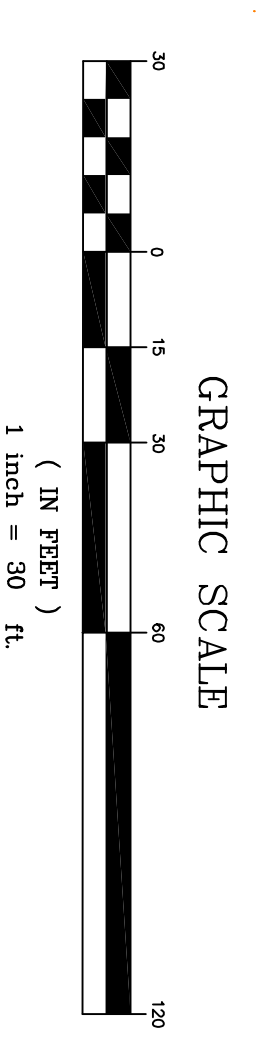


- CONSTRUCTION ITEMS THIS PLATE**
 870 LF OF 6" DIP WM
 (2) 6" x 6" TAPPING SLEEVES & VALVE (W/ BOX)
 (1) 6" - 90° BEND
 (2) 6" - 45° BEND
 (1) HYDRANT ASSEMBLY (COMPLETE - SEE DETAIL)
 R & R 75 LF ASPHALT DRIVEWAYS
 R & R 80 LF ASPHALT ROADWAYS
 7 SHORT SERVICES
 9 LONG SERVICES



- Station 0+00
 Remove Existing Hydrant
 & Tie Into Existing Valve
 340 LF of 6" DIP
- Replace Existing Hydrant
 w/ New Hydrant Assembly
 (complete)
 (2) 45° Gate Valves (W/Box)



PALMETTO UTILITY PROTECTION SERVICE

A one call system for community and job safety.

STOP - CALL BEFORE YOU DIG
 Toll free 1-888-SC1-PUPS
 (give 72 hours notice)

CAUTION
 THE UTILITIES SHOWN ARE SHOWN FOR THE CONTRACTOR'S CONVENIENCE ONLY. THERE MAY BE OTHER UTILITIES NOT SHOWN ON THESE PLANS. THE CONTRACTOR ASSUMES ALL RESPONSIBILITY FOR IDENTIFYING AND VERIFYING THE LOCATIONS OF ALL UTILITIES WITHIN THE LIMITS OF THE WORK. ALL DAMAGE MADE TO EXISTING UTILITIES BY THE CONTRACTOR SHALL BE THE SOLE RESPONSIBILITY OF THE CONTRACTOR.



CPW
 COMMISSIONERS OF PUBLIC WORKS
 P.O. BOX 549
 GREENWOOD, SC 29648

**CDBG WATERLINE
 UPGRADE-SOUTHEAST
 CITY OF GREENWOOD
 CDBG NO. 4-CI-1-012
 AUGUST 27, 2011**

SHEET NAME:
 PLAN VIEW

APPROVALS:

DRAWN: WRH
APPROVAL: CEG
DATE: 08/27/11
SCALE: 1" = 30'
SHEET NUMBER:

PV-4